

大杉沢地区

除草 $\Sigma A = 2,000 + 2,460 + 2,350 + 920$

$= 7,730\text{m}^2$

$\approx 7,700\text{m}^2$

$\Sigma V = 7,700 \times 2.75\text{t} / 10,000\text{m}^2$

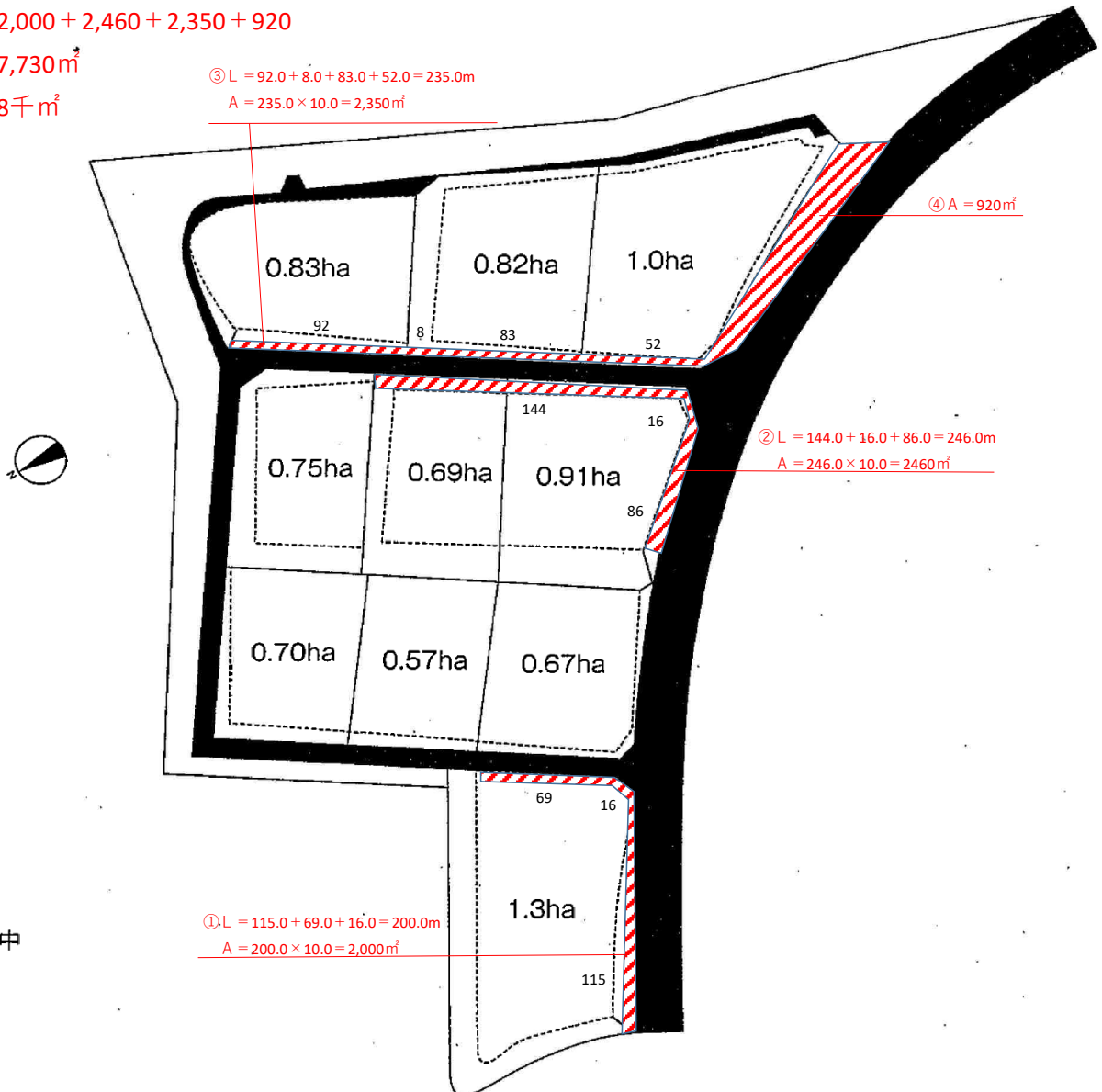
$= 2.117$

$\approx 2.12\text{t}$ (10kg単位 (10kg未満切り上げ))

清掃 $\Sigma A = 2,000 + 2,460 + 2,350 + 920$

$= 7,730\text{m}^2$

$\approx 8\text{千m}^2$



□…分譲中